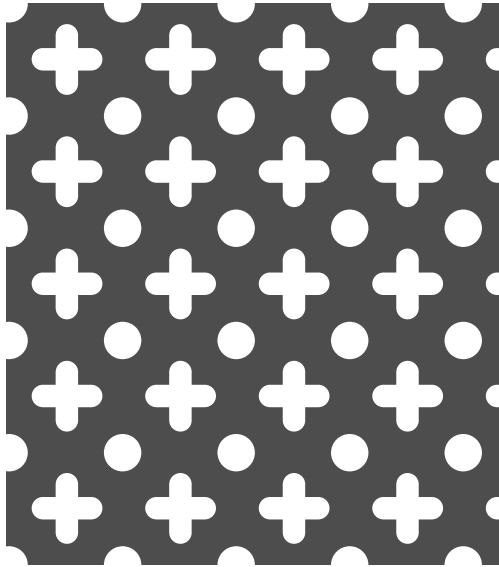


装飾用穴

No1327

丸十

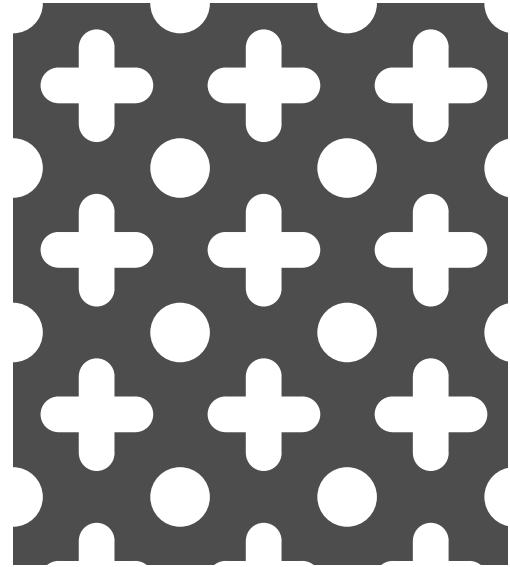


⑤ 板厚0.8t~1.6tに対応

28.3%

No1328

丸十

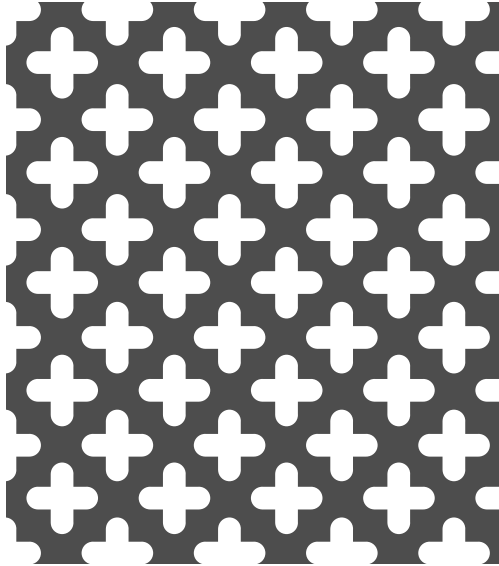


⑤ 板厚2.3tに対応

34.0%

No1332

十文字

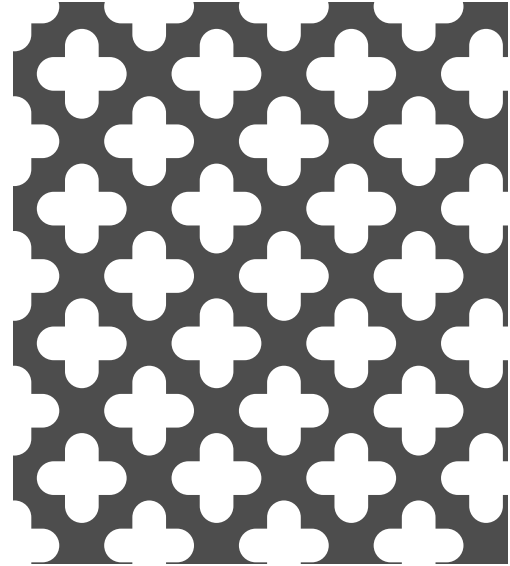


⑤ 板厚1.6tに対応

34.5%

No1334

十文字

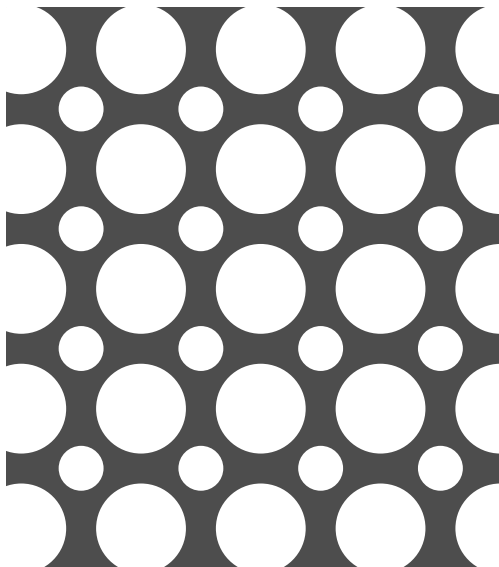


板厚2.3tに対応

48.8%

No2300

D=6 D=12 P=16



55.2%

No2301

D=18 P=32 平行

