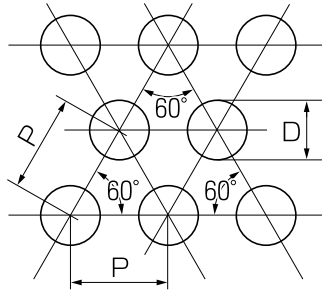


4. 配列及び開孔率の計算方法

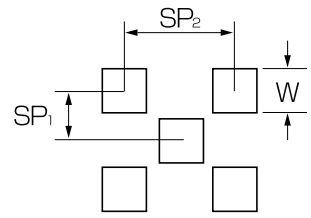
① 60°千鳥型

$$\text{開孔率}(\%) = \frac{90.6 \times D^2}{P^2}$$



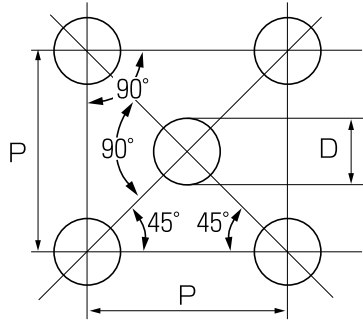
⑥ 角穴千鳥型

$$\text{開孔率}(\%) = \frac{W^2}{SP_1 \times SP_2} \times 100$$



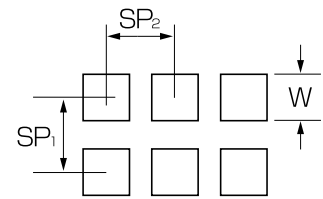
② 角千鳥型
(45°千鳥型)

$$\text{開孔率}(\%) = \frac{157 \times D^2}{P^2}$$



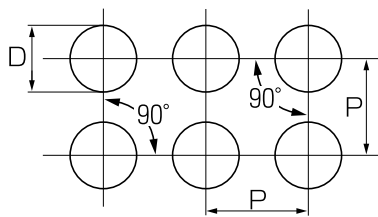
⑦ 角穴並列型

$$\text{開孔率}(\%) = \frac{W^2}{SP_1 \times SP_2} \times 100$$



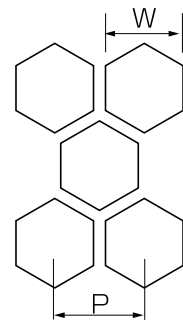
③ 並列型

$$\text{開孔率}(\%) = \frac{78.5 \times D^2}{P^2}$$

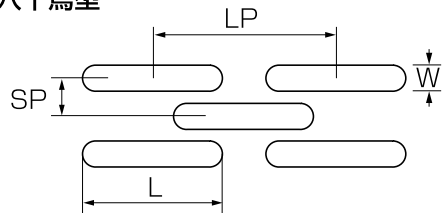


⑧ 六角形60°千鳥型

$$\text{開孔率}(\%) = \frac{W^2}{P^2} \times 100$$

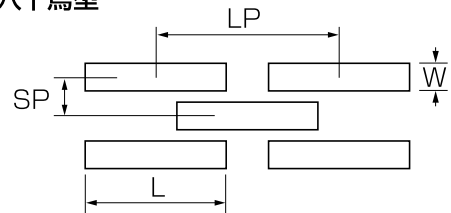


④ 長丸穴千鳥型



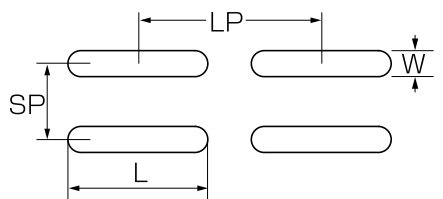
$$\text{開孔率}(\%) = \frac{(2 \times W \times L) - (0.43 \times W^2)}{2 \times SP \times LP} \times 100$$

⑨ 長角穴千鳥型



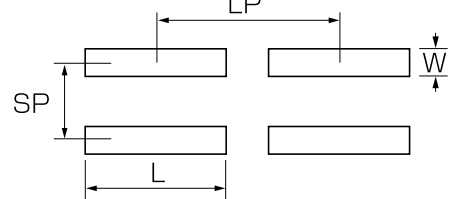
$$\text{開孔率}(\%) = \frac{W \times L}{SP \times LP} \times 100$$

⑤ 長丸穴並列型



$$\text{開孔率}(\%) = \frac{(2 \times W \times L) - (0.43 \times W^2)}{2 \times SP \times LP} \times 100$$

⑩ 長角穴並列型



$$\text{開孔率}(\%) = \frac{W \times L}{SP \times LP} \times 100$$